

Anti-Swine IgG (H&L) Secondary Antibody
Rabbit Polyclonal, Unconjugated
Catalog # ASR3546**Specification****Anti-Swine IgG (H&L) Secondary Antibody - Product Information**

Description	Anti-SWINE IgG (H&L) (RABBIT) Antibody
Host	Rabbit
Conjugate	Unconjugated
Target Species	Swine
Clonality	Polyclonal
Application	WB, E, IC
Application Note	ELISA 1:20,000-1:100,000;Western Blot 1:2,000-1:10,000;Immunochemistry 1:1,000-1:5,000
Physical State	Lyophilized
Host Isotype	IgG
Target Isotype	IgG (H&L)
Buffer	0.02 M Potassium Phosphate, 0.15 M Sodium Chloride, pH 7.2
Immunogen	Swine IgG whole molecule
Reconstitution Volume	5.0 mL
Reconstitution Buffer	Restore with deionized water (or equivalent)
Stabilizer	None
Preservative	None

Anti-Swine IgG (H&L) Secondary Antibody - Additional Information**Shipping Condition**

Ambient

Purity

This product is an IgG fraction antibody purified from monospecific antiserum by a multi-step process which includes delipidation, salt fractionation and ion exchange chromatography followed by extensive dialysis against the buffer stated above. Assay by immunoelectrophoresis resulted in a single precipitin arc against anti-Rabbit Serum, Swine IgG and Swine Serum.

Storage Condition

Store vial at 4° C prior to restoration. For extended storage aliquot contents and freeze at -20° C or below. Avoid cycles of freezing and thawing. Centrifuge product if not completely clear after standing at room temperature. This product is stable for several weeks at 4° C as an undiluted liquid. Dilute only prior to immediate use.

Precautions Note

This product is for research use only and is not intended for therapeutic or diagnostic applications.

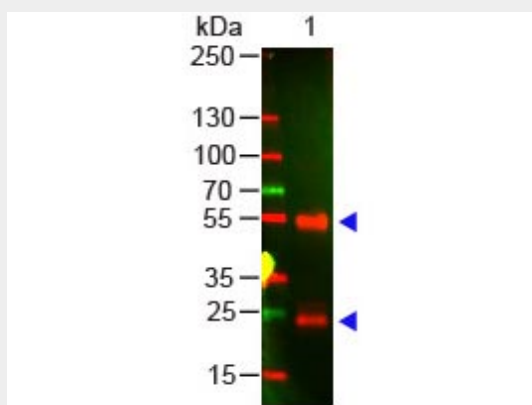
Anti-Swine IgG (H&L) Secondary Antibody - Protein Information

Anti-Swine IgG (H&L) Secondary Antibody - Protocols

Provided below are standard protocols that you may find useful for product applications.

- [Western Blot](#)
- [Blocking Peptides](#)
- [Dot Blot](#)
- [Immunohistochemistry](#)
- [Immunofluorescence](#)
- [Immunoprecipitation](#)
- [Flow Cytometry](#)
- [Cell Culture](#)

Anti-Swine IgG (H&L) Secondary Antibody - Images



Western Blot of Rabbit anti-Swine IgG Antibody. Lane 1: Swine IgG. Load: 100 ng per lane. Primary antibody: Swine IgG Antibody at 1:1000 for overnight at 4°C. Secondary antibody: DyLight™ 649 goat anti-rabbit at 1:20,000 for 30 min at RT. Block: MB-070 for 30 min at RT.